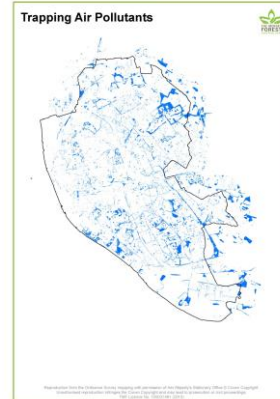


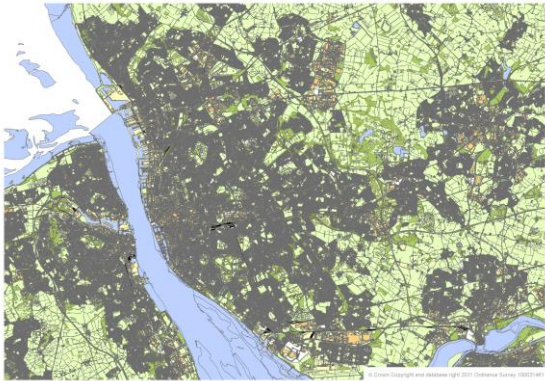
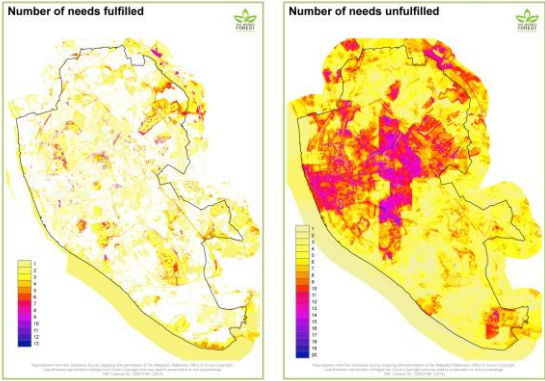


Tom Butlin



- recreation - public
- recreation - private
- recreation - public with restrictions
- green travel route
- aesthetic
- shading from sun
- evaporative cooling
- trapping air pollutants
- noise absorption
- habitat for wildlife
- corridor for wildlife
- soil stabilisation
- heritage
- cultural asset
- carbon storage
- food production
- timber production
- biofuels production
- wind shelter
- learning
- inaccessible water storage
- accessible water storage
- water interception
- water infiltration
- coastal storm protection
- water conveyance
- pollutant removal from soil/water
- flow reduction through surface roughness





[www.merseyforest.org.uk](http://www.merseyforest.org.uk)  
[www.ginw.co.uk](http://www.ginw.co.uk)  
[www.ginw.co.uk/liverpool/Technical\\_Document.pdf](http://www.ginw.co.uk/liverpool/Technical_Document.pdf)  
 Appendix 1