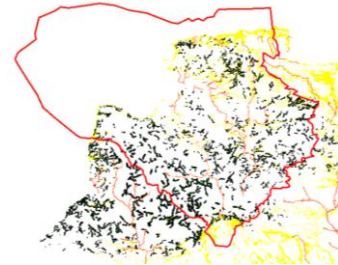


Biodiversity Offsetting

Mapping woodland creation for 3 ecosystem services

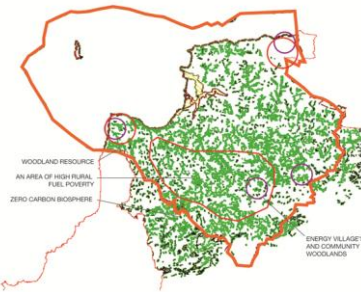
- join or link existing woodlands (black)
- create buffer to rivers to reduce silt run off (orange)
- Plant steep slopes to attenuate flooding (yellow)



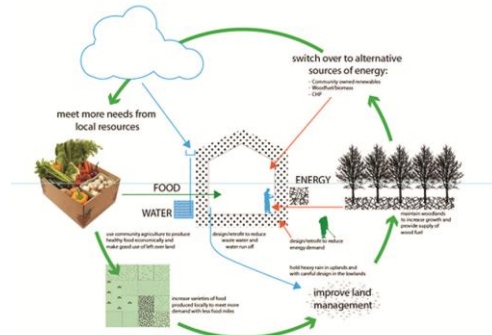
Community woodlands and energy villages

Towards a Zero Carbon Biosphere

- Develop economic case for community owned renewable energy
- Link energy villages and community woodland projects
- Engage public and private support



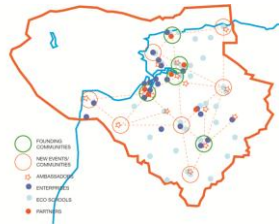
Supporting and enabling adaptation



Sharing and consolidating good practice

Social, economic and environmental:

- Sustainable community network and Biosphere Learning Laboratory
- Ambassadors and Eco Schools
- Business engagement and accreditation



How does spatial planning fit with the Biosphere approach?

- Sub regional; shared planning policies for two LA areas – able to jointly test approaches to delivery
- Multidisciplinary Biosphere Service and Partnership to set out economic value and environmental function of landscapes (and resources) at an ecosystem scale
- Initiatives such as 'offsetting' and NIA consolidate site by site actions
- Ability to link understanding and actions at landscape, community and individual scales

