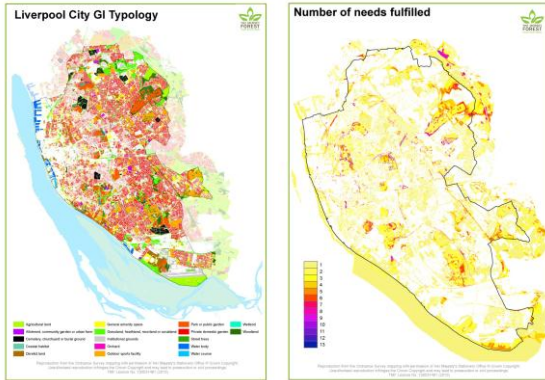




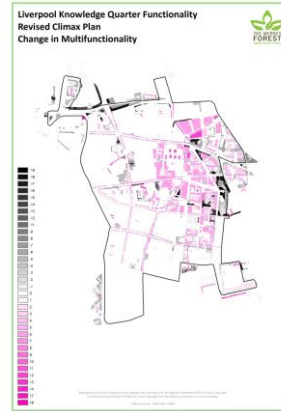
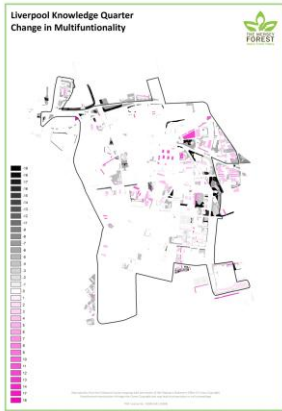
Tom Butlin

*Green infrastructure approach*  
 ≈  
*Ecosystem services approach*



- Liverpool
- Carlisle
- Weaver Valley
- Alder Hey Children’s Hospital
- Ayrshire
- Liverpool Knowledge Quarter
- A49 corridor
- Liverpool City Region
- Everton Park





# LIVERPOOL

GREEN INFRASTRUCTURE STRATEGY

## TECHNICAL DOCUMENT



Liverpool Green Infrastructure Site Informer

Upload a zip file containing your site boundaries in MapInfo TAB format

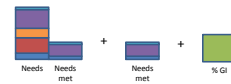
Buttons: [Browse] [Upload]

helen.brown@liverpool.gov.uk - New Tables (2) Final SMLAA Database GIS 2010 Update TAB - uploaded Thursday 26 June 2012 11:12:29 - 1240 sites complete						
Export table below in Excel format	Export all results for sites in Excel format	Export all results for sites within buffer of sites in Excel format				
Identifying field 1: _2008_CAP	Identifying field 2: PHOTO_TAKE	Identifying field 3: INCLUDED	Multifunctionality	Needs fulfilled	Needs not fulfilled within 400m buffer	Comments
emma.farnwood@liverpool.gov.uk - Final SMLAA Database GIS TAB - uploaded Thursday 17 May 2012 15:12:52 - 1114 sites complete						
Export table below in Excel format	Export all results for sites in Excel format	Export all results for sites within buffer of sites in Excel format				
Identifying field 1: NAME	Identifying field 2: LAND_TYPE	Identifying field 3: SITE_ID	Multifunctionality	Needs fulfilled	Needs not fulfilled within 400m buffer	Comments
emma.farnwood@liverpool.gov.uk - New Sites TAB - uploaded Wednesday 16 May 2012 13:43:11 - 131 sites complete						
Export table below in Excel format	Export all results for sites in Excel format	Export all results for sites within buffer of sites in Excel format				
Identifying field 1: SMLAA_REF	Identifying field 2: (pick one)	Identifying field 3: (pick one)	Multifunctionality	Needs fulfilled	Needs not fulfilled within 400m buffer	Comments



## Option C

$$= \left( 3 \times \frac{\text{Sum of percentages of site area covered by needs met}}{\text{Sum of percentages of site area covered by needs}} \right) + \left( 3 \times \frac{\text{Sum of percentages of site area covered by needs met}}{28} \right) + \text{Percentage of site area covered by GI}$$



### Description

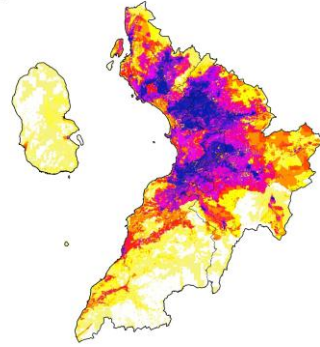
Builds on A and B. This option gives us a greater ability to distinguish between sites that have different numbers of needs met and more fully takes into account the area of the site covered by GI.

- Pros**
- Includes the proportion of needs met - the most important consideration?
  - Range of values is from 0 to 1
  - Doesn't include or require any arbitrary thresholds
  - Takes into account proportion of site area covered by GI
  - Can't give the same figure with different numbers of needs met

- Cons**
- Relatively difficult to explain calculation
  - Includes weightings that may be difficult to explain and then defend



Needs not fulfilled



Reproduction from the Carbon Trust  
Mapping with permission of the Mapping &  
Information Office of the Carbon Trust  
The Carbon Trust is a registered charity in  
England and Wales, No. 10005487 (2011)



tom@merseyforest.org.uk